

CREATION. FREEDOM

OFF THE KERB'S 18TH ANNIVERSARY SHOW

OPENING: Fri 11 April 6-8pm

DATES: 10 - 24 April 2025

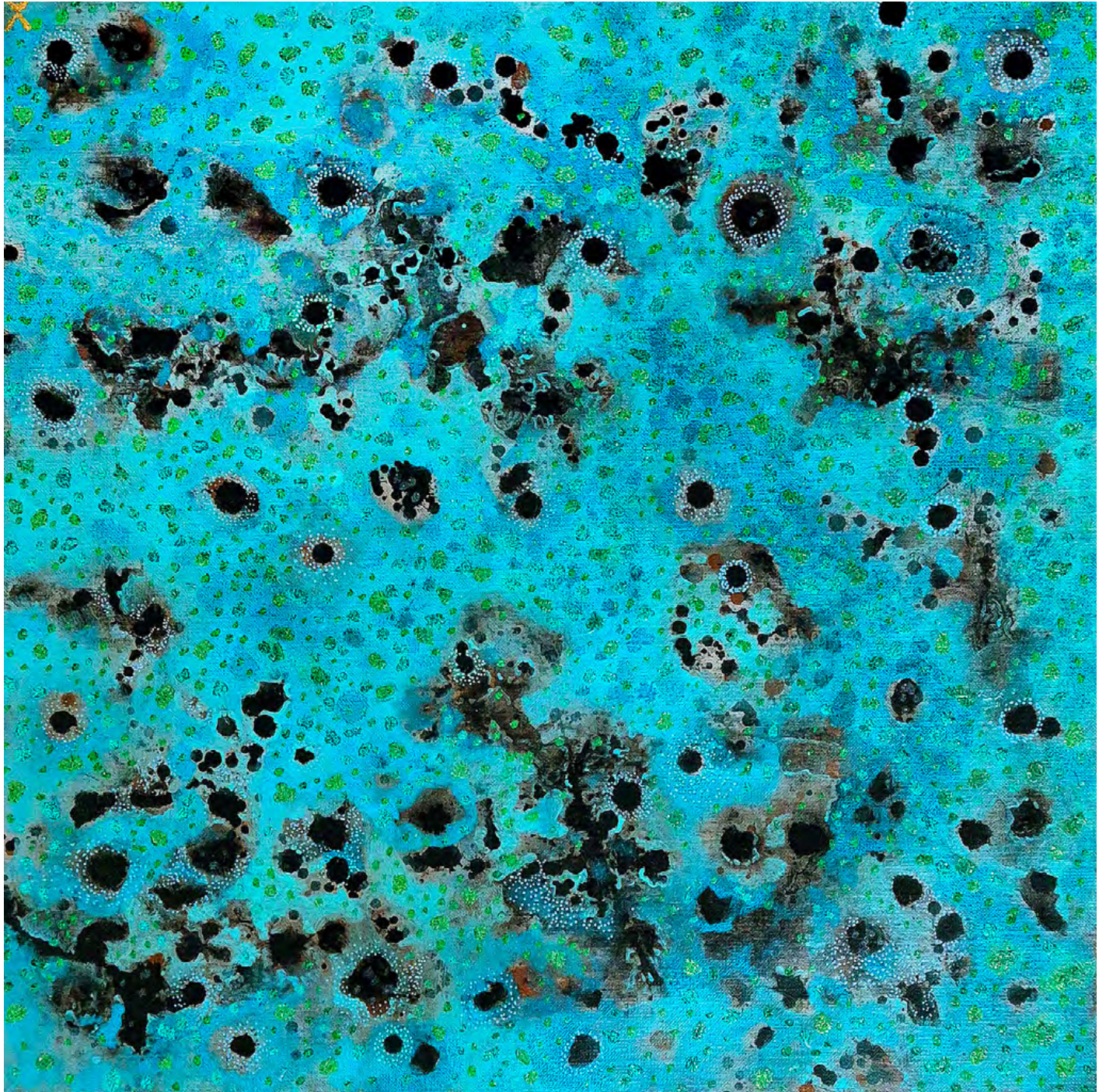


Keep on painting, with a smile
by Glen Downey

Acrylic on Aluminium Composite in walnut frame

62x62cm

\$1500 **SOLD**

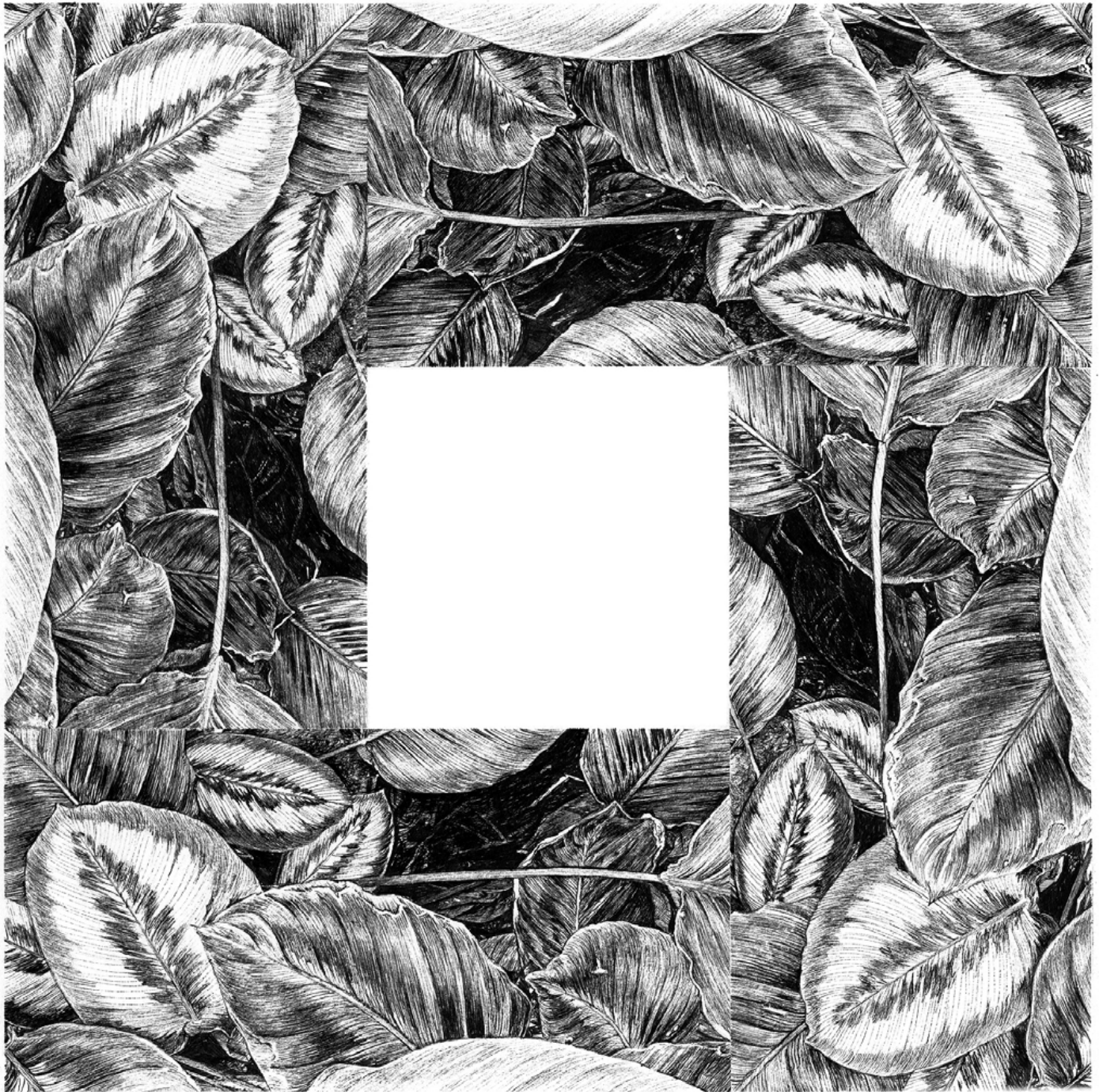


NGAITJI
by Adam Nyangu Hill
Acrylic on Linen
60cm x 60cm
\$1100 **SOLD**

Adam Nyangu Hill is a proud Ngarrindjeri man based in Uluru. This painting titled 'Ngaitji' means 'totem' in Ngarrindjeri language. It explores the deep spiritual and cultural connections between Ngarrindjeri people and their totems. This work is a dedication by the artist to David Unaipon, a visionary Ngarrindjeri man from Raukkan, a brilliant inventor, writer, and advocate for Aboriginal rights. He fought for justice, education, and better opportunities for his people. A true innovator, Unaipon's inventions earned him the title of Australia's 'Leonardo da Vinci'. His relentless curiosity and genius continue to inspire generations. His legacy lives on as a symbol of Ngarrindjeri excellence, knowledge, and resilience.



Memoria
by Brian Cheung
Ink and watercolour on paper framed
27cm x 35cm
\$750



Hollowed
by Brian Cheung
Ink on paper framed
32cm x 32cm
\$650



Life on High
by Adrian Jilich
acrylic on timber panel
60cm x 45cm
\$1180 **SOLD**



Gold Doors
by Alice Gold
Mixed media collage & acrylic floating in shadow box frame
40cm x 48cm
\$2250



Inheritance
by Alice Lamont
oil on canvas
30.5cm x 30.5cm
\$450

Inheritance explores the weight and wonder of artistic legacy. In this self-portrait, I stand before a painting my father made of me at eight years old—his gaze and mine meeting across time. The work is rendered in techniques he taught me, embodying both his influence and my own voice. Inheriting his art means inheriting his strengths, flaws, and the all-consuming pull of painting. It is a meditation on what remains: the persistence of creativity despite struggle, the echoes of a mentor in every brushstroke, and the enduring conversation between past and present on the canvas. Love, grief, legacy.



I just want to draw
by Almost Iris
acrylic paint, ink, plywood, acrylic sheet
19.2cm (W) x 16.2cm (H)
\$420



Studio buddy
by Almost Iris
acrylic paint, ink, plywood, acrylic sheet
11cm (W) x 19cm (H)
\$420 **SOLD**



Into the Blue
by Alia
Oil on wooden panel
40cm x 50cm
\$750



Green, Green Valley
by Anne Kucera
Watercolour, on paper framed
31.5cm x 22.7cm
\$340 **SOLD**



Weather and Spirit in motion
by Anne Kucera
acrylic monotype framed
37.5cm x 29.7cm
\$440 **SOLD**



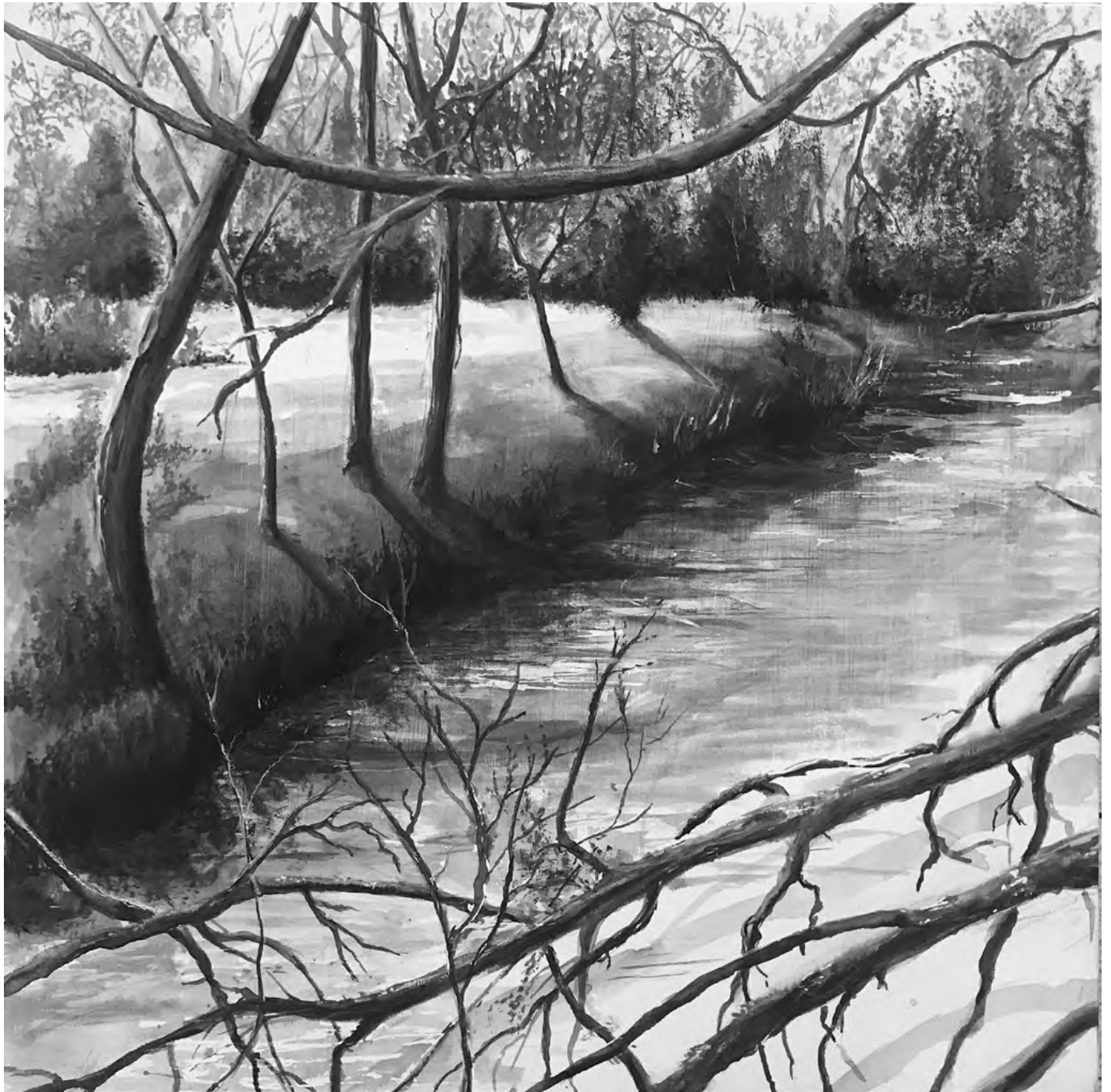
These palm trees are killing my vibe
by Brendan Rowe
acrylic and pen on board
50x60cm
\$800 **SOLD**



Growth
by Cat Parker
Gouache on panel framed
24cm x 24cm
\$350



Pleasure and Pain
by Claire Weaver
Acrylic on canvas framed
43cm x 53.5cm
\$590



KooyongKoot Creek 1
by Deb Marshall
Ink, acrylic and watercolour on timber panel
30cm x 30cm
\$240 **SOLD**



KooyongKoot Creek 2
by Deb Marshall
Ink, acrylic and watercolour on timber panel
30cm x 30cm
\$240 **SOLD**



Study of Myopic Regression
by Dan Go
Coloured pencils, charcoal and solvent on paper framed
36cm x 48cm
\$350



Seed
by Darcy Shilton
Limestone
46 cm (H) x 30cm (W) 17cm (D)
\$700



Aim For The Stars
by Darren Frisina
Oil on wood panel
25x30cm
\$480



What's next?
by Eleanor Ballinger
Oil on paper framed
28cm x 35cm
\$400



Floating Serenity
by Fleur Optekamp
Paper Collage in white shadow box frame
40cm x 62cm
\$680



Dawn Over Ivanhoe
by Geoff Harrison
Oil on canvas
56cm x 41cm
\$550



Below
by Howard Kimber
Oil on canvas framed
62cm x 62cm
\$800 **SOLD**



Altered course
by HWJ
Acrylic on panel framed
62cm x 42cm
\$1750

What feels like a year passed, another lifetime ago, almost as if this altered state has become her dogma. She's wandered this vast and expansive landscape, full of what look like monuments to freedom of expression, minimal yet complex, intimidating but emanating a sense of warmth. Yet to find any other signs of life, she finally feels a sense of calm here. After climbing the tower in the clouds and creating a makeshift home in what feels like the only safe place, she looks over the expanse, still clinging to her shawl, a reminder of what once was.. Still hopeful for what's next.



How Many Will It Take?
by Jen Selmore
Pencil on toned paper in vintage frame
30cm x 42cm
\$450 **SOLD**



Anywhere You're Going
by Julia Novella
Acrylic paint and beads on panel
19cm x 14cm
\$450



Personification
by Khashayar Salmanzadeh
Oil and acrylic on board
40.7 x 30.6 cm
\$1300



Bodily Autonomy
by Kim Kermode
acrylic on panel framed
30cm x 40cm
\$600

Bodily Autonomy is Kim's way of sharing her life during post partum and her admiration for women. Motherhood is a vulnerable time and while navigating new terrain, society has made sure to share what is allowed to be shown in public and what should be covered up. Thankfully this is being changed as we are plowing forward with bodily autonomy rights and women's rights.



Rim of Being
by Kym Lee
Oil on Board
58cm x 58cm
\$800 **SOLD**



Blue Luna Flower No. 1
by Leza Cullen
Ceramic sculpture, earthenware, oxide glaze
18cm x 18cm
\$420



Smothered in Hugs
by Liam Snootle
acrylic on aluminium panel framed in acrylic box frame
40 x 40cm
\$1100



Autologous cranioplasty
by Lisa Banh
Stoneware clay, glaze, gold, fired in oxidation
20cm H x 23cm W x 23cm D
\$720 **SOLD**



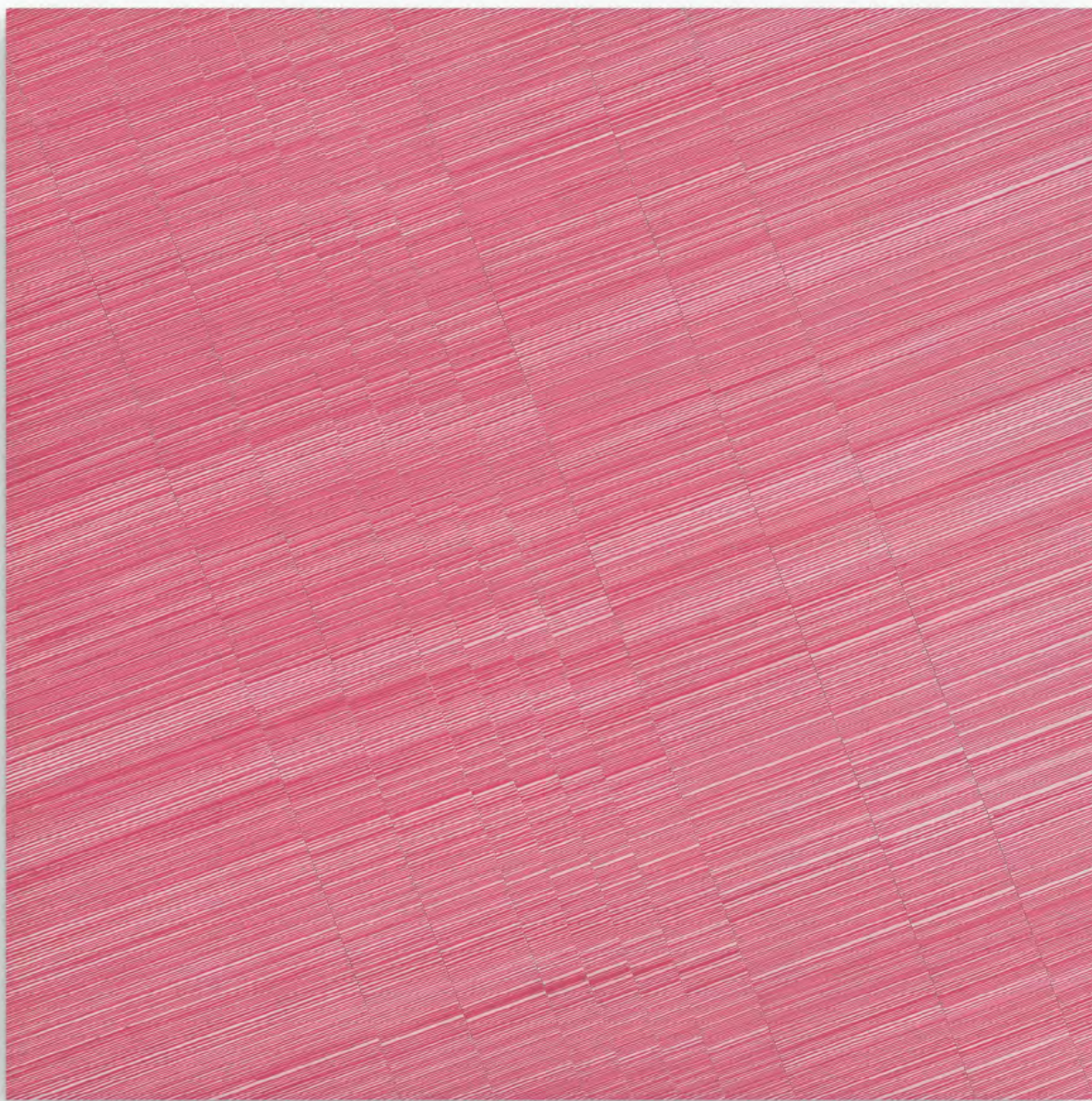
Dusk
by Lukas Kasper
Acrylic on carved timber floated in shadow box frame
48cm x 28cm
\$500 **SOLD**



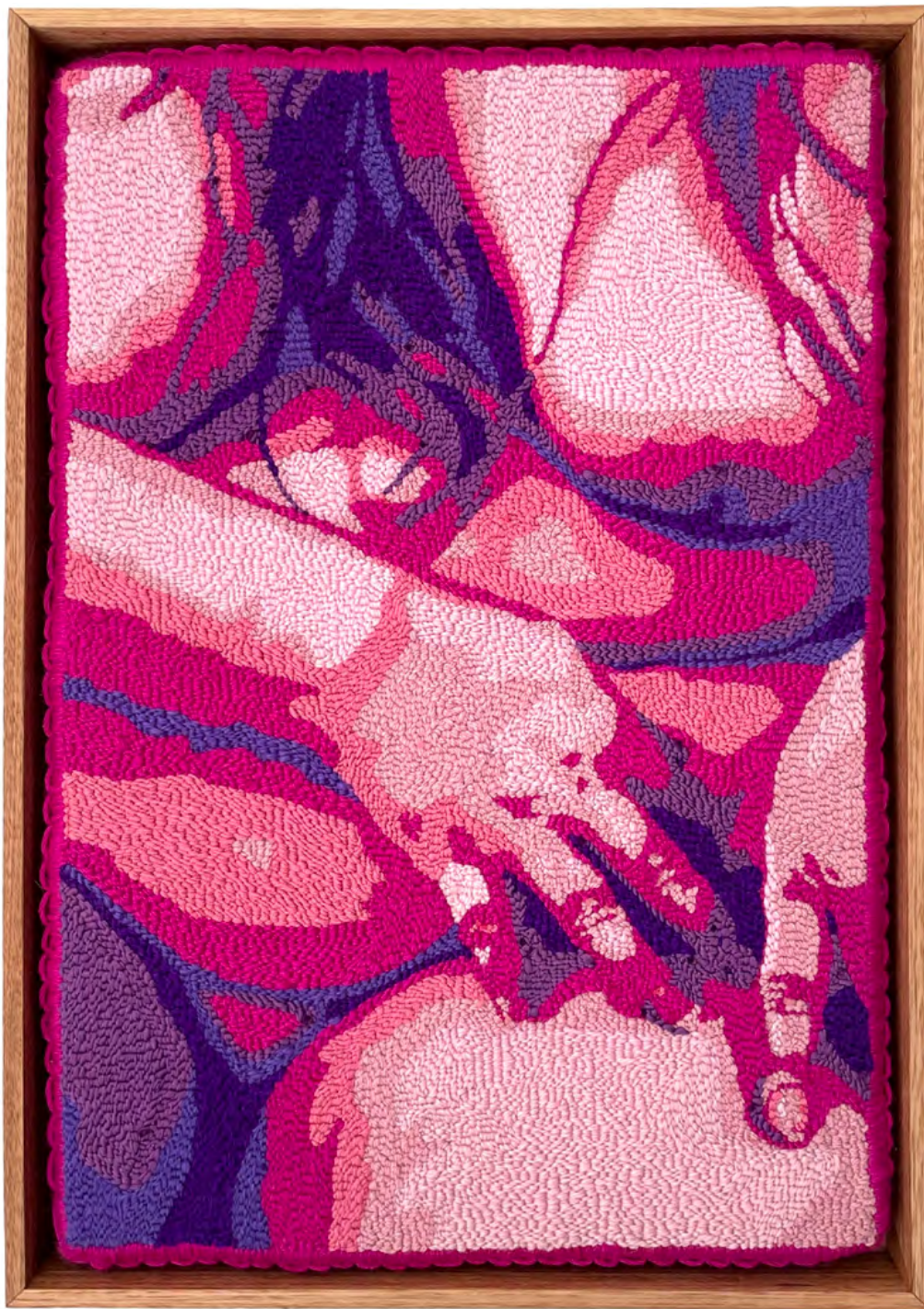
Dawn
by Lukas Kasper
Acrylic on carved timber floated in shadow box frame
48cm x 28cm
\$500



Megadrive against garden wall (study)
by Luke Rion
Acrylic Polymer on Hardwood Panel in Tasmanian Oak Frame
21cm x 26cm
\$370 **SOLD**



Striations No.03, PR48.4 & PW6
by Lyle Kahn
Acrylic on paper, cut-and-mounted on panel
50cm x50cm x 3cm
\$680



Soft Edges
by Macarena Ocea
Punch Needle embroidery in oak frame
57cm x 39cm
\$1300 **SOLD**



Embellishments

by Manda Lane

Handcut paper, acrylic and aluminium in perspex box frame

20cm x 30cm x 60cm

\$840



Paint your fridge
by Max Ballard
oil on canvas
61cm x 46cm
\$900 **SOLD**



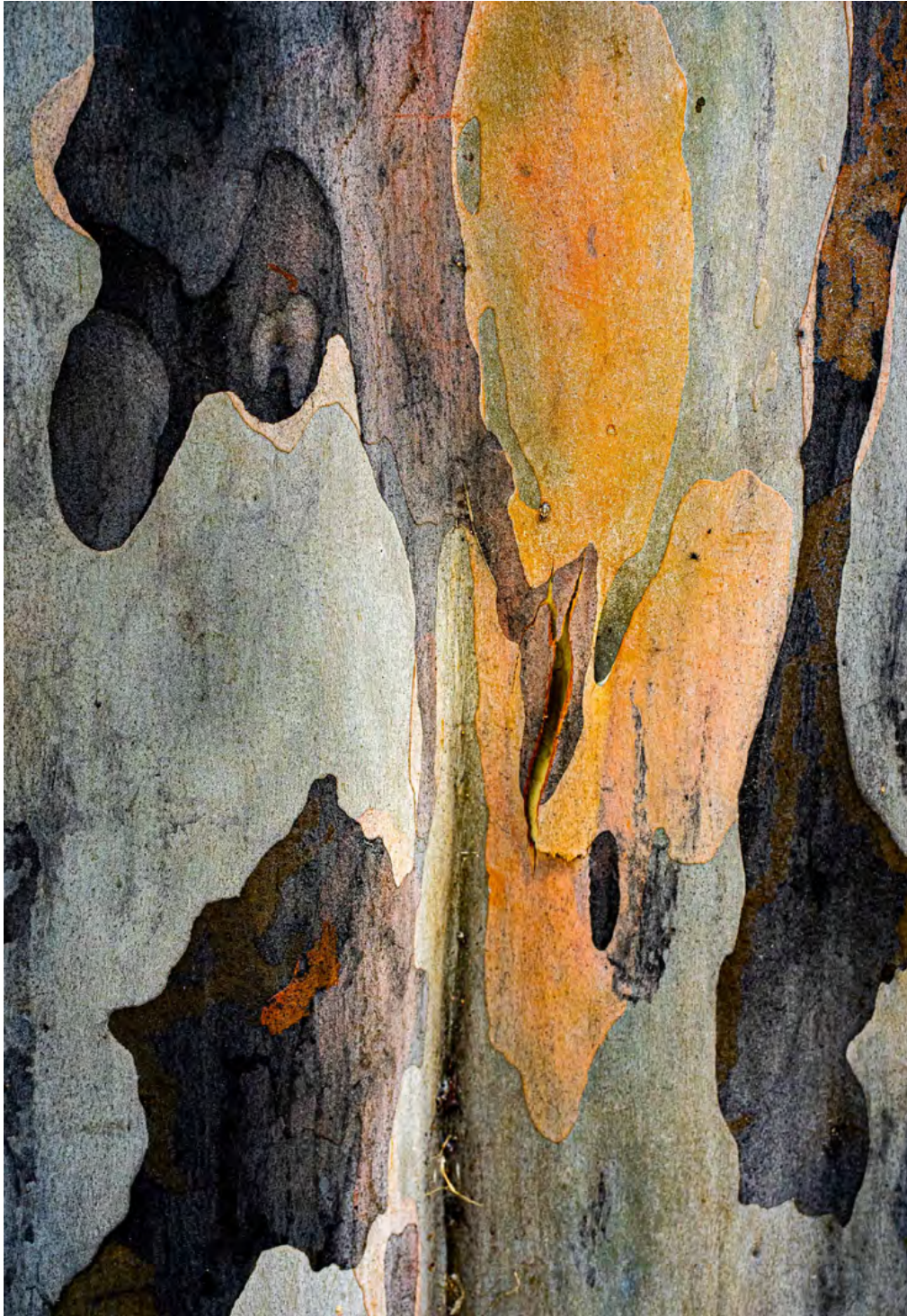
A Day in the Garden
by Meg Kolac
acrylic on timber panel framed
42cm x 52cm
\$510 **SOLD**



Green fence and flowers
by Nicholas Aplin
acrylic on board
60cm x 30cm
\$650



Bind and liberate
by Nick Heynsbergh
coloured pencil on paper framed
41cm x 18cm
\$1000



Father to Son
by Nina Killham
giclee photo on hemp paper, framed
45cm x 52cm
\$500

This work is about my continuing awareness of our native trees--their fragility and their stories--during this time of widespread destruction and deforestation.



Flood Waters
by Ryan Pola
graphite on paper framed
46cm x 46cm
\$900



One teaspoon of soil contains more living things than there are people on the planet.
by Sarah Strickland
gouache on paper framed
39cm x 50cm
\$650



Land of the free
by Stephen Doan
acrylic gouache on timber panel framed
50cm x 40cm
\$1450



Freefall
by Viet-My Bui
acrylic gouache on panel
40cm x 40cm
\$915



Grace
by VKM
aerosol & acrylic on wood panel
40cm x 30cm
\$280 **SOLD**



Gil Gil
by Victoria Nguyen
oil on wood panel
20cm x 20cm
\$300 **SOLD**



Fireworks and Fireplaces
by Victoria Nguyen
oil on wood panel
10cm x 10cm
\$180 **SOLD**



Nicholson Street
by Victoria Nguyen
oil on wood panel
12cm x 18cm
\$280 **SOLD**



Hill
by Yiyi Lee
Stoneware ceramic sculpture
H 14cm x W 21cm x D 18.5cm
\$450 **SOLD**



Kiddy and the Thing
by Ying Huang
gouache on panel in shadow box frame
42cm x 37cm
\$750 **SOLD**

Kiddy is unsure whether to concentrate on the 'thing' on the plate or the 'things' charging at her nose.



Something Blue 2
by Ying Wang
Acrylic paint and acrylic polymer on canvas, framed
30cm x 35cm
\$570



Sleeve
by Zachary Beven
Oil on Canvas
40cm x 50cm
\$620

For sales enquiries please
email your name & phone number to:

info@offthekerb.com.au

or ring

0400530464

Interest Free Layby | Ship Worldwide



66B JOHNSTON STREET COLLINGWOOD

T (03) 9077 0174 M 0400 530 464

info@offthekerb.com.au | www.offthekerb.com.au

Thur - Fri 12.00pm - 6.00pm | Sat - Sun 12.00pm - 5.00pm