

WINTER DAYS

GROUP SHOW

OPENING: Fri 20 June 6-8pm

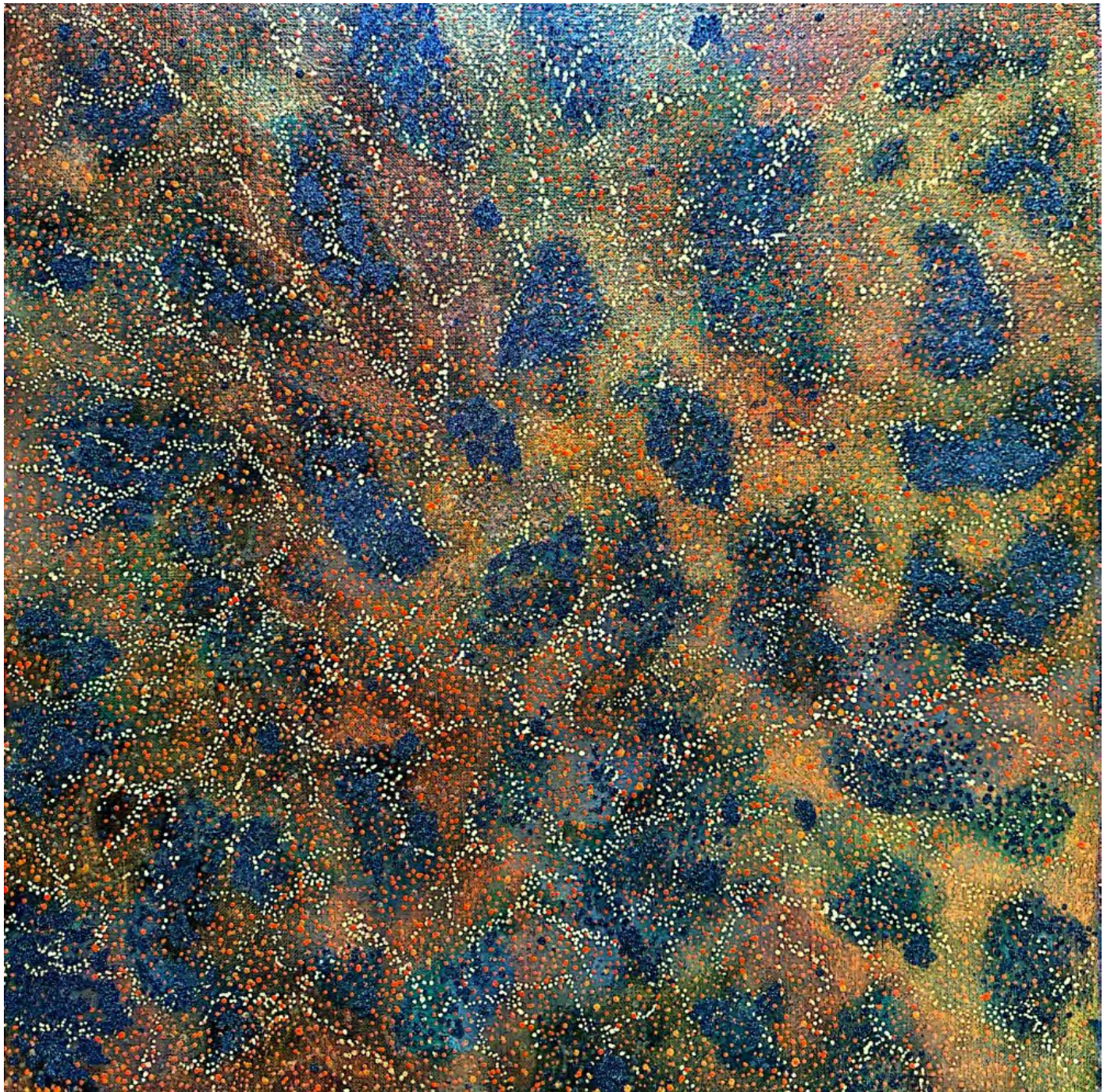
DATES: 19 June - 5 July 2025



Inverno
by Glen Downey
acrylic on marine ply in oak frame
62.5cm x 52.5cm
\$2500



You are overreacting
by Adriana Artmeier
acrylic on panel framed
32.5cm X 17.5cm
\$700 **SOLD**



Nyaru
by Adam Nyangu Hill
Acrylic on Linen
60cm x 60cm
\$1100

Nyaru means a patch of stretched-out, burnt Country blackened yet still very much alive. It is a place of quiet transformation, where new life begins to stir beneath the surface. It symbolizes renewal, responsibility, and our connection to Tjukurpa (Ancestral Lore). Nyaru is both a tribute and a testimony to fire, and to the ancient knowledge that continues to care for this land - a practice that has been carried out for thousands of years by Anangu.

As we move into the winter months, we begin our burning when conditions are right, when it is cool and calm. These winter fires are not destructive. They protect the land from dangerous wildfires in the summer and nourish it with regrowth, bringing back food plants and strengthening ecosystems. Nyaru is inspired by my lived experience working on Country at Uluru Kata Tjuta National Park where I have had the privilege of conducting patch burning under the guidance of Anangu elders.



Escaping the Rain in Footscray
by Ada Grant
oil on canvas in oak frame
29cm x 36cm
\$880



The rocket shack
by Adrian Jilich
acrylic on board in oak frame
60cm x 45cm
\$1250



Kew afternoon
by Ben Taylor
Oil on canvas framed
52cm x 62cm
\$680



Not many out tonight
by Ben Taylor
Oil on canvas framed
52cm x 62cm
\$680



Valley View
by Christos Parstioglou
oil on canvas framed
60cm x 60cm
\$1400



Sanctuary
by Alice Lamont
Oil on canvas
51cm x 41cm
\$1060

"Sanctuary" explores winter's most profound gift—the sacred pause that invites introspection. In this work, I engage with winter not merely as a season, but as an emotional state where transformation quietly gestates.



Murmuration
by Anne Kucera
Acrylic on canvas framed
32.5cm x 32.5cm
\$440



Welcome home
by Max Ballard
Oil on canvas
120cm x 60cm
\$1100



Sinking into Blue (Dreaming of you)
by Alizon Gray
Oil on Canvas framed in oak
55cm x 43cm
\$1250



Dream Palette
by Eleanor Ballinger
Watercolour and colour pencil on paper framed
35.5cm x 46cm
\$450



The Quiet Between
by Kym Lee
Oil on Wood
60cm x 60cm
\$780



Sugar Moon
by Lisa Banh
Stoneware, glaze, wood ash, platinum- fired in reduction
17.5 H x 17.5 W x 4.5 cm D
\$240



Winter Moon
by Lisa Banh
Stoneware, glaze- fired in oxidation
18.5 H x 18.5 W x 4.5 cm D
\$310



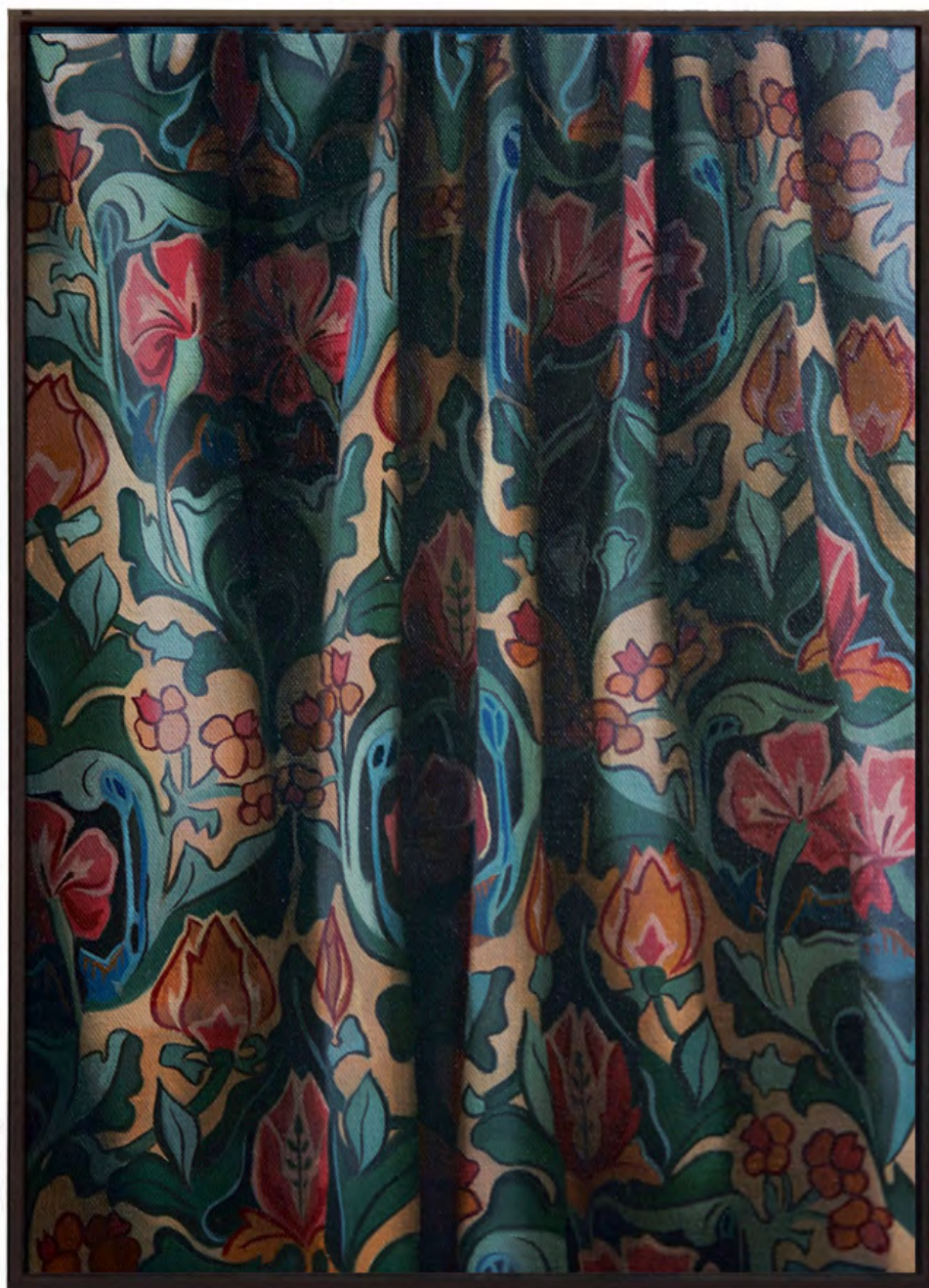
Harvest Moon
by Lisa Banh
Stoneware, glaze, wood ash, copper- fired in oxidation
17.5 H x 17.5 W x 4.5 cm D
\$260



Hibernate
by Mahtous
acrylic on board
50cm x 50cm
\$750



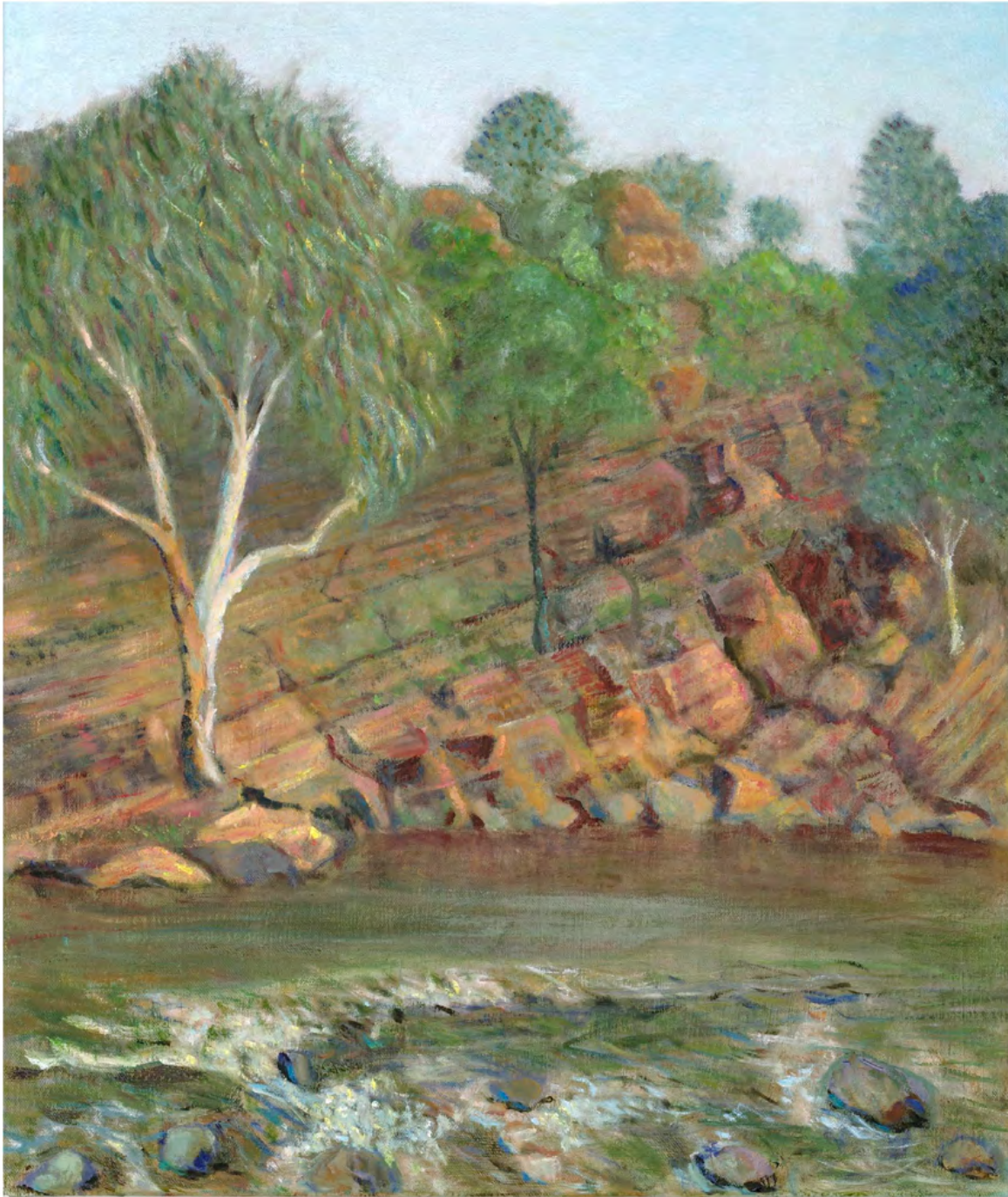
Drape I
by Marco Pennacchia
Oil on canvas framed
25cm x 35cm
\$750



Drape II
by Marco Pennacchia
Oil on canvas framed
25cm x 35cm
\$850



Silver Mountain
by Christopher Allery
Archival Inkjet Print on Cotton Rag framed (1/5)
60cm (H) x 46cm (W)
\$875 (framed) / unframed A2 \$495



Yarra Bend
by Yukiko Ueno
oil on canvas
60cm x 51cm
\$580



Late Autumn in Tokyo
by Yukiko Ueno
oil on canvas
70cm x 60cm
\$780



The Unfolding - Grampians
by Victoria Nguyen
Oil on raw canvas framed
32.5cm x 27.5cm
\$560



Favourites
by Megan Hall
Oil on Canvas framed
50x50cm
\$490



Winter Warmers
by Aleks Grilz
Acrylic on linen
46cm x 35
\$450



She Brought the Fire
by Aleks Grilz
Acrylic on linen
46cm x 35cm
\$400



Dreams of hosting a dinner party
by Brendan Rowe
acrylic and pen on board
40cm x 40cm
\$650



Tidewalker 1
by Chris Costa
Oil pastel pencil on cotton rag framed
34cm x 28cm
\$300



Tidewalker 2
by Chris Costa
Oil pastel pencil on cotton rag framed
34cm x 28cm
\$300



Starlight Rainfall
by Ella Heckendorf
Gouache acrylic paint on panel framed
32.5cm x 43cm
\$650



To rest is to dream
by Olivia Rae Razuki
Acrylic & gouache on board
50cm x 60cm
\$450



Sketch for Winter - The Gaso
by Christopher Roberts
Ink and watercolour framed
36cm x 28cm
\$320



Winterised
by Jen Selmore
Pencil on toned paper in vintage frame
26cm x 31cm
\$460



Lilit
by Holly Block
antique wedding shoes,
taxidermy chicken feet,
carnauba wax, metallic powder,
oil paint, tulle wedding veil
Dimensions variable
\$800



Minestrone
by Meg Kolac
acrylic on board framed
36cm x 46cm
\$380



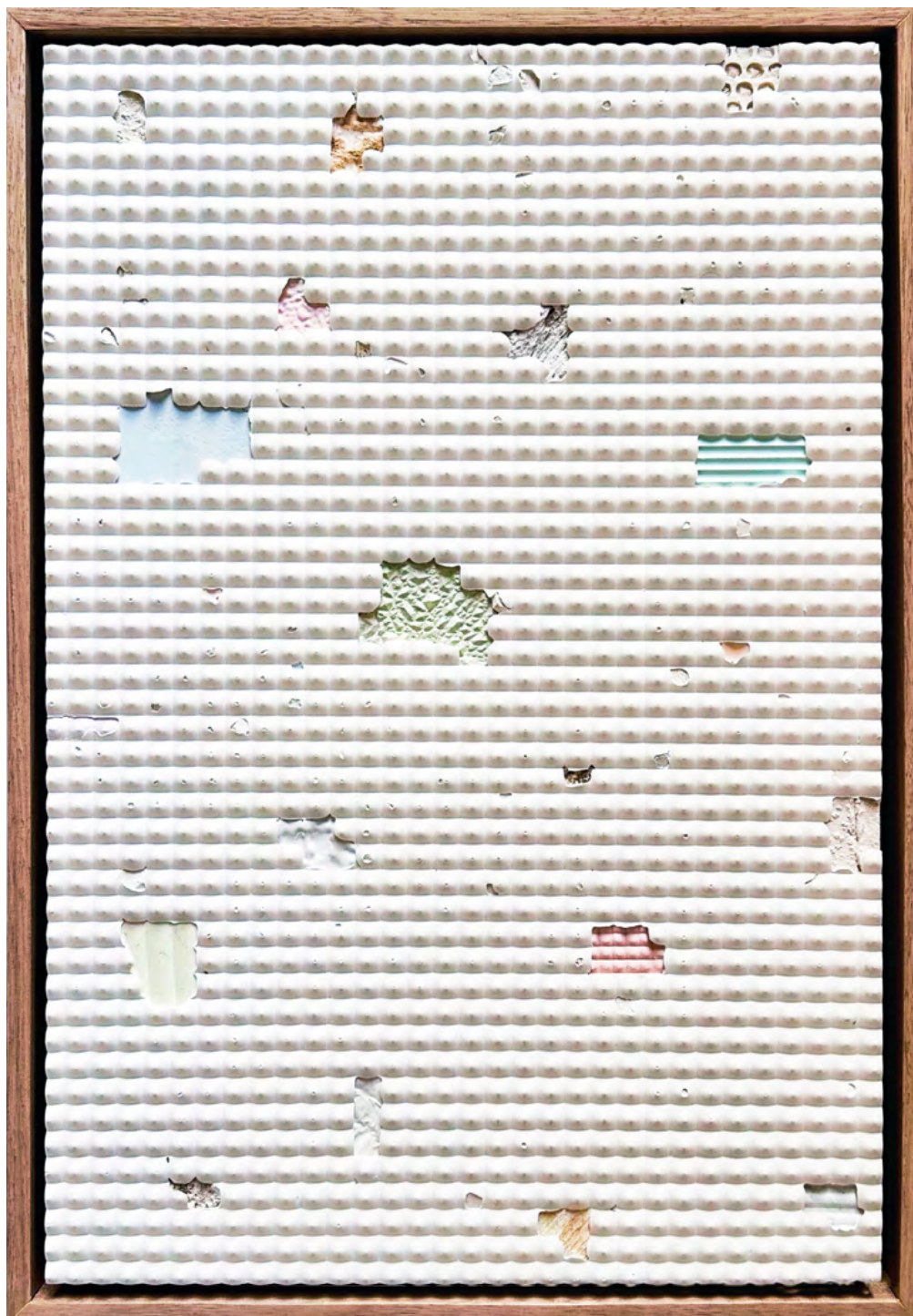
Phantom
by Mitchell Asquith
Oil on panel framed
48cm x 60cm
\$700



Cosy
by Yiyi Lee
Earthenware, oxides, clear glaze
H 25cm x W 25cm x D 11cm
\$550



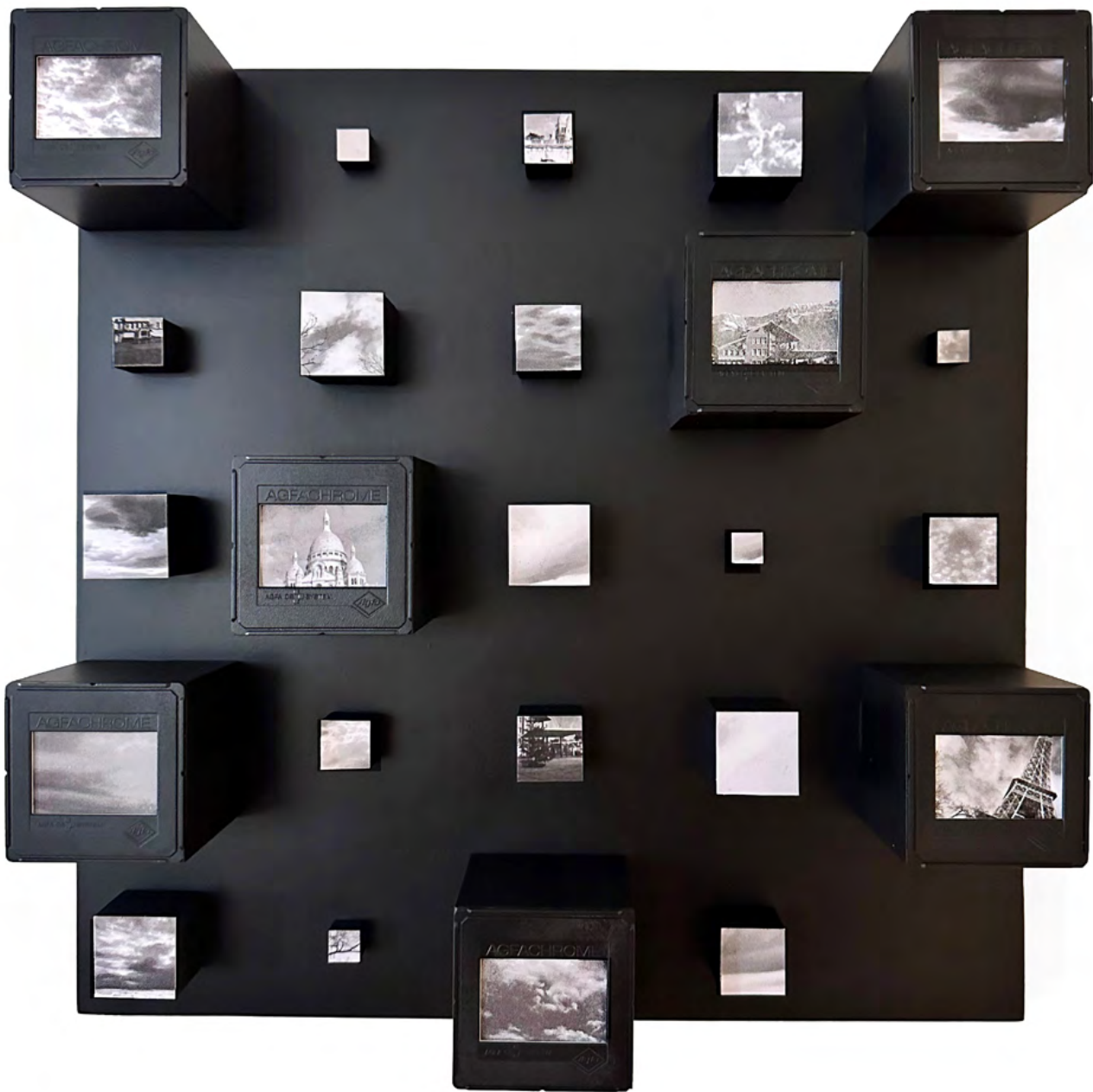
Snug
by Yiying Lee
Earthenware, oxides, clear glaze
H 7.5cm x W 14cm x D 3cm
\$300



Adduce
by Rhys Cousins
pigmented plaster on board framed
45cm x 30cm
\$760

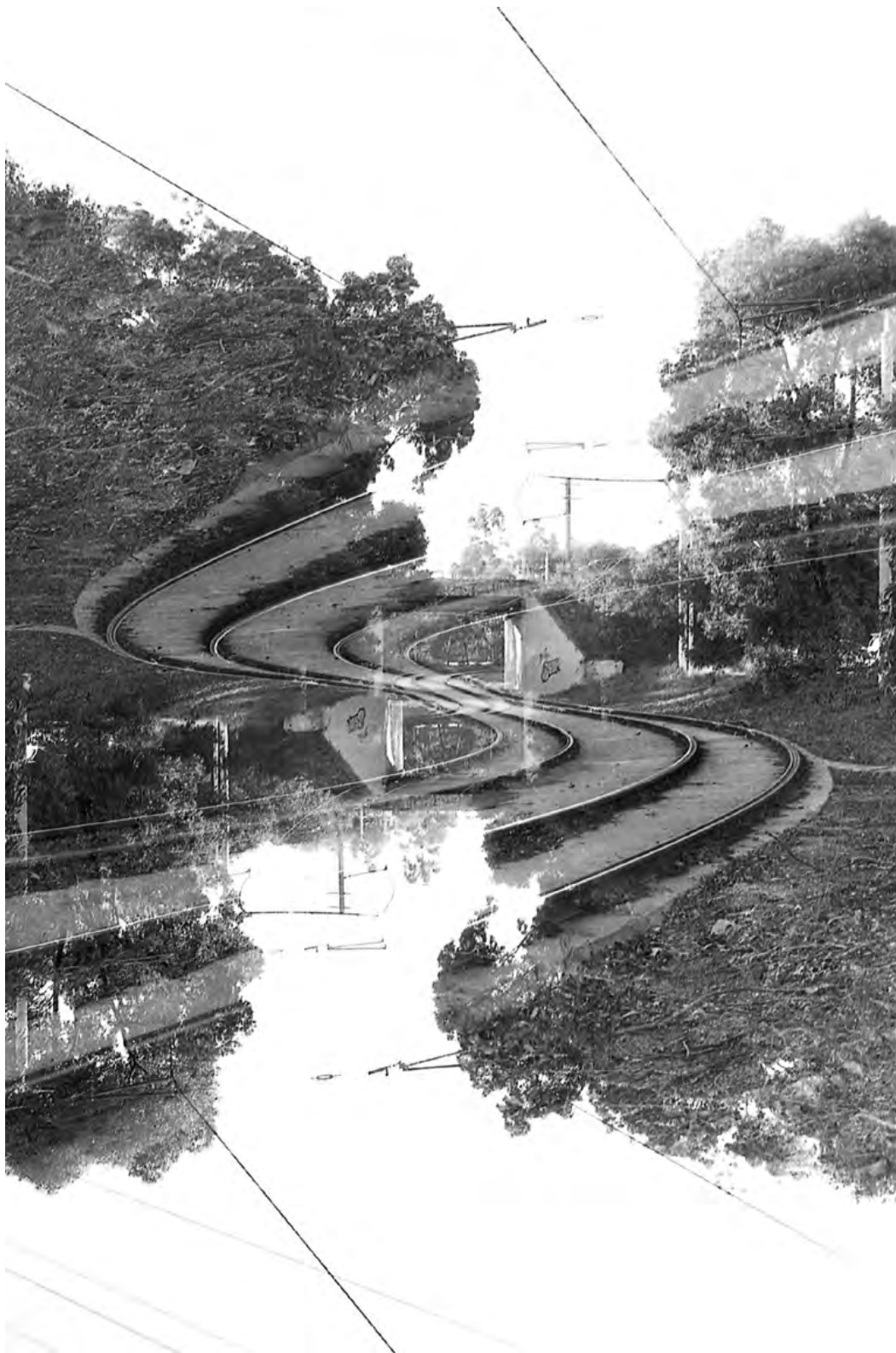


Reserved
by Aude
Graphite on paper framed
44cm x 54cm
\$500



Cloud Cover
 by Peta Tranquille
 Timber, artist pigment, photograph, photographic slides
 30cm x 30cm x 7cm
 \$700

Cloud Cover reflects how memory fractures without mental imagery. With Aphantasia, memory is stored without images, recalled without clarity. Darkened forms mark the weight of past moments—recognisable yet unreachable. What remains is a quiet tension between what was lived and what can no longer be seen.



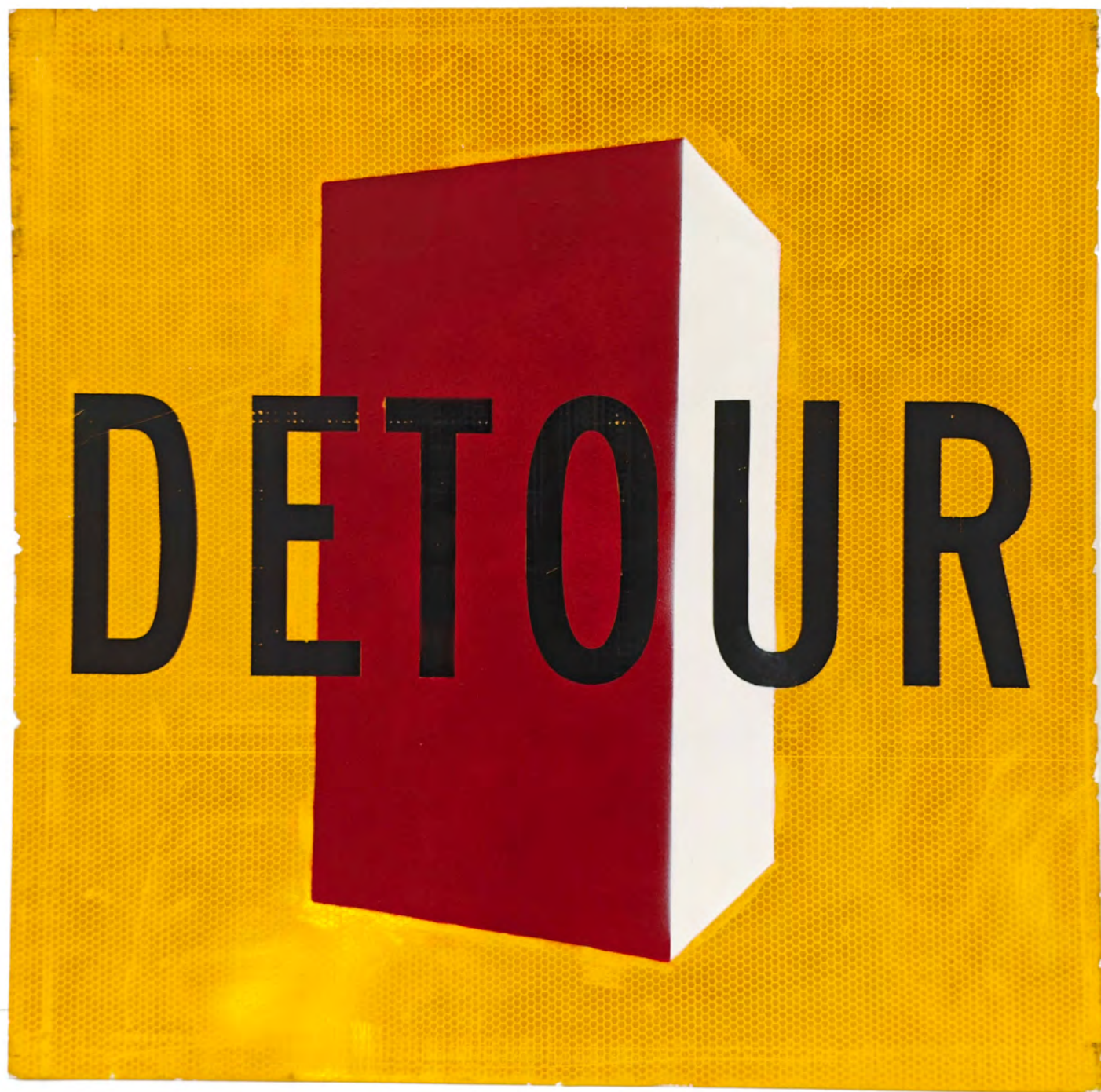
Allay
by Zo Damage
Gelatin silver print (Limited edition of 3+2AP)
35cm x 51cm
\$420 unframed / \$520 framed



High Ambitions
by Zo Damage
Gelatin silver print framed (Limited edition of 3+2AP)
35cm x 51cm
\$420 unframed / \$520 framed



Man at work
by Falconeris Marimón
spray paint on corflu road sign
60cm X 60cm
\$900



Detour
by Falconeris Marimón
spray paint on corflu road sign
60cm X 60 cm
\$900

For sales enquiries please
email your name & phone number to:

info@offthekerb.com.au

or ring

0400530464

Interest Free Layby | Ship Worldwide



66B JOHNSTON STREET COLLINGWOOD

T (03) 9077 0174 M 0400 530 464

info@offthekerb.com.au | www.offthekerb.com.au

Thur - Fri 12.00pm - 6.00pm | Sat - Sun 12.00pm - 5.00pm